

# ECO CIRCUIT





# Bihar

With recorded history going back 3000 years, Bihar, where India's first major empires rose and fell, the land from where the light of Buddhism and Jainism spread to the world, enriched by the river Ganga flowing deep and wide, boasts of numerous tourist spots where the love for flora, fauna, peace, and cultural heritage are the primary attractions. Bihar's rich and diverse wildlife is preserved and concentrated in its natural treasure-houses in the form of protected areas. There are national parks, wildlife sanctuaries, flower gardens, and wetlands for tourists to explore and enjoy.



# West Champaran

## *Valmiki Nagar Tiger Reserve*



The eastern-most limit of the Himalayan Terai forests in India, along the Nepal border is occupied by the Valmiki Tiger Reserve. Situated in the Gangetic Plains bio-geographic zone, Valmiki Nagar Tiger Reserve, spread over 880 sq km is the only tiger reserve in Bihar. The Reserve hosts a rich diversity of flora and fauna, being home to tigers, leopards, sloth bears, flying foxes, flying squirrels, wild cats, langur, sloth bears, several species of deer and antelopes viz. barking deer, spotted deer, hog deer, sambar and blue bull, over 250 species of birds and a variety of reptiles and butterflies. Touching the foothills of the Himalayas, the unique dense valley and hill sal forests, along with the majestic view of the Himalayas at Valmiki Nagar Tiger Reserve make it a unique touristic experience.

### How to Reach

**Air:** Jayprakash Narayan International Airport is the nearest airport.

**Rail:** It has its own Railway Station named Valmiki Nagar Railway Station.

**Road:** West Champaran is well connected via roads.





## Katihar

### *Gogabill Lake*



Located in the Amdabad block of Katihar district, the Gogabill Lake is one of the largest wetlands in Bihar. Covering an area of 217 acres, it is home to more than 300 migratory birds from the Caspian Sea and Siberian region, during monsoon and winters. The perennial lake, which communicates with the Ganga and Mahananda rivers during peak monsoons and floods, serves as a sanctuary for many varieties of terrestrial and aquatic animals, birds and plants. The rich flora and fauna of the wetlands make it a must visit place for every tourist who wants to explore the ecological aspect of Bihar.

#### **How to Reach**

**Air:** Bagdogra is the nearest airport.

**Rail:** The nearest railway station is Katihar Junction.

**Road:** The nearest bus stand is at Manihari.

## Bhagalpur

### *Vikramshila Gangetic Dolphin Sanctuary*



A 50 km stretch of the holy river, Ganga, from Sultanganj to Kahalgaon has been designated as the only protected area for the endangered Gangetic dolphins in Asia. The Vikramshila Gangetic Dolphin Sanctuary, initiated as a protection area for the national aquatic animal of the country serves as a fascinating resource to witness these magnificent creatures in their natural habitat. The sight of seeing a dolphin dance on the river or just drifting out from underwater and flying in the air makes your visit an unforgettable experience.

#### **How to Reach**

**Air:** Jayprakash Narayan International Airport is the nearest airport.

**Rail:** Bhagalpur is well connected by rail as it has its own railway station.

**Road:** Bhagalpur is well connected by nearby towns by road.



# Munger

## *Bhimbandh*



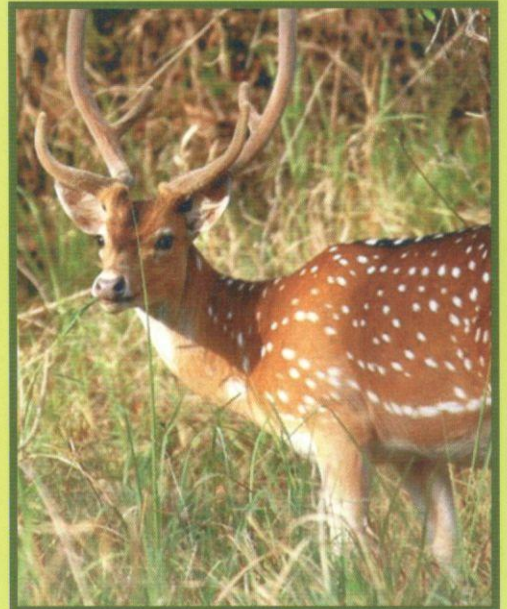
Occupying an area of about 682 sq. km, Bhimbandh Wildlife Sanctuary is located in the south-west of Munger District of Bihar. It covers dense forests and hot water springs with an average temperature of about 52 to 65 °C all year round. Lying in the famous Kharagpur range, Bhimbandh Wildlife Sanctuary boasts of a very rich and varied fauna. The animal species found at Bhimbandh Wildlife Sanctuary are tigers, panthers, wild boars, sloth bear, sambar deer, chital, four-horned antelope and nilgai, and more than 100 species of resident birds. The wildlife sanctuary also has two forest rest-houses. Rich vegetation takes place in these forests where Sal, Semal, and other trees grow simultaneously the hilly terrains which act as a shade protecting the humble creepers from sun rays. If you walk down a little bit you will find numerous hot springs at Bhimbandh, Sita Kund, and Rishi Kund.

### How to Reach

**Air:** Jayprakash Narayan International Airport is the nearest airport.

**Rail:** Munger is approximately 6 km away from Jamalpur Railway Station.

**Road:** Patna is approximately 5 hours drive from Munger. Taxis are available at Patna Railway Station or you can avail BSRTC bus services.





# Nalanda

## *Ghoda Katora*



Surrounded by hills from three sides and adorned by a statue of the Buddha in Dhyanchakra Mudra in the middle of the lake, Ghoda Katora Dam is scenic destination. A little time spent in this captivating spot gives a feeling of tranquility and peace. Surrounded by natural beauty and immaculate scenery, undisturbed by the din of the cities, spontaneously calms the soul. Tourists can also indulge the joy of horse cart ride, or in the facilities of boating in the lake.

### How to Reach

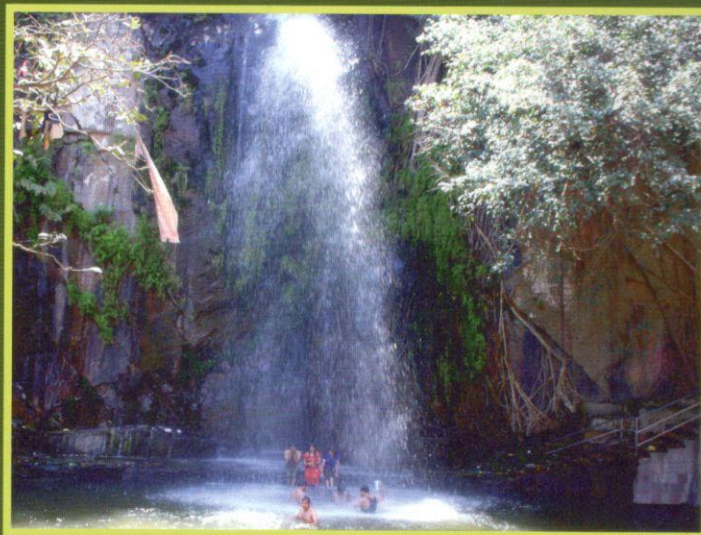
**Air:** : Jayprakash Narayan International Airport is the nearest airport.

**Rail:** Rajgir Railway Station is the nearest railway station.

**Road:** Nalanda is well connected to nearby towns by road.

# Nawada

## *Kakolat*



About 34 km away from Nawada, Kakolat waterfall, located on the border of Bihar and Jharkhand is a prime example of the sheer beauty of Mother Nature cascading down from great heights into a natural reservoir. The height of the fall is approximately 150 to 160 feet from the ground level. The scene is panoramic surrounded in the lush greenery of the forested area all around. According to legend, in the Treta Yuga, a king had been cursed by a Rishi, to take the form of a python and reside in the lake. When the great Pandavas visited this place during their exile, the accursed king got salvation from the damnation. Thereafter, the king pronounced that anyone who bathed in the waterfall will never be reborn as a snake – leading to the tradition of believers taking a holy dip in the waterfall. A big fair is held on the occasion of Chait Sankranti.

### How to Reach

**Air:** Jayprakash Narayan International Airport is the nearest railway station.

**Rail:** Nawadah Railway Station is the nearest railway station.

**Road:** Nawada is well connected to nearby towns by road.



# Kaimur

## *Kaimur Sanctuary*



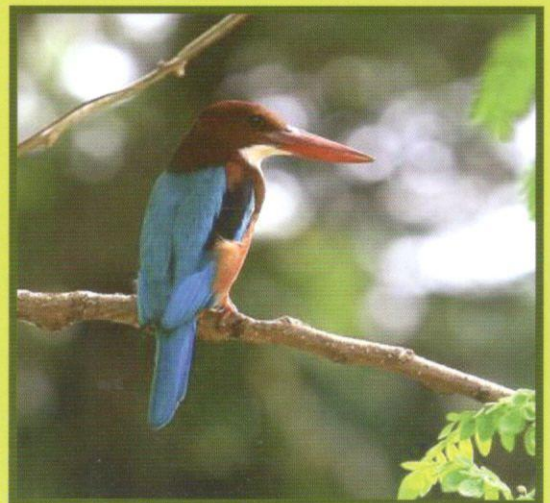
Kaimur Wildlife Sanctuary, most famous for the Black Bucks, was established in 1982 with the aim of safeguarding the flora and fauna of the Vindhya region. Spread over 1505 sq. km in Rohtas and Kaimur district, the Kaimur Wildlife Sanctuary is situated in the southernmost part of Bihar. The wildlife comprises of Chinkara, four-horned antelope, blue-bulls, sambar, cheetal, bear and leopard. Snakes, pythons and crocodiles, besides a variety of migratory birds can also be easily spotted here.

### **How to Reach**

**Air:** The nearest airport is Babatpur Airport, Varanasi.

**Rail:** Bhabhua Railway Station is the nearest railway station.

**Road:** The nearest bus stand is Bhabhua.





*Kanwar Lake, Begusarai*



Directorate of Tourism, Government of Bihar  
Website: [www.bihartourism.gov.in](http://www.bihartourism.gov.in)